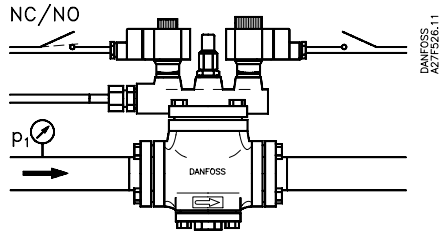


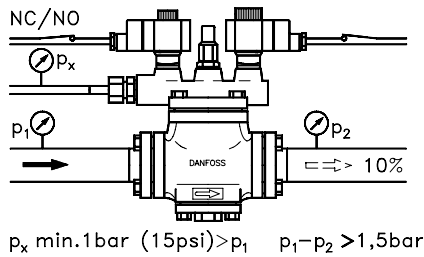
027R9511

027R9511

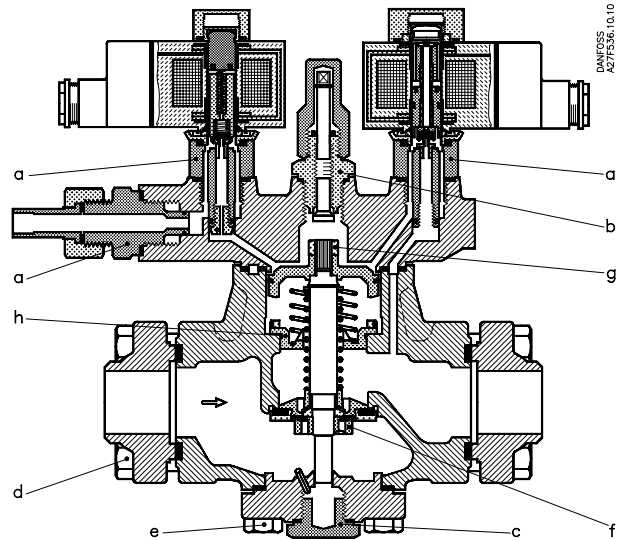
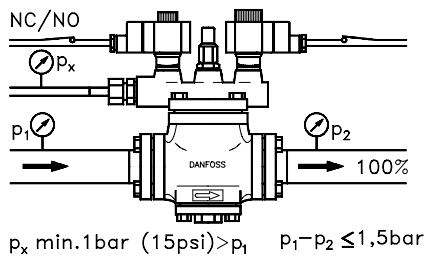
Closed



Step 1, open

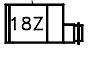


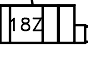
Step 2, open

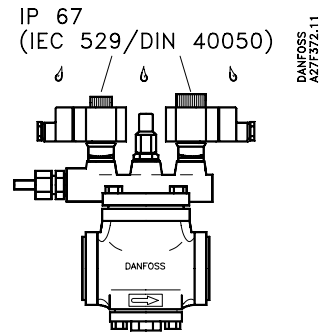
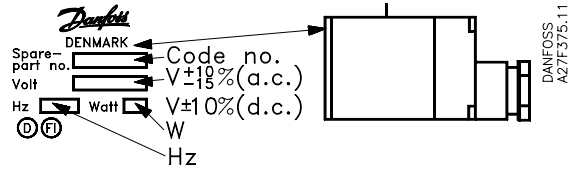


Pos. item								
	PMLX 32	PMLX 40	PMLX 50	PMLX 65	PMLX 32	PMLX 40	PMLX 50	PMLX 65
a	M24 × 1.5				50 Nm			
b	M20 × 1.5				50 Nm			
c	M24 × 1.5				50 Nm			
d	M12 × 1.75		M14 × 2	M14 × 2	60 Nm		80 Nm	
e	M10 × 1.5	M12 × 1.75		M14 × 2	45 Nm	60 Nm	80 Nm	
f	M12 × 1.75		M16 × 2		55 Nm		60 Nm	60 Nm
g	M12 × 1.5				30 Nm			
h	M48 × 1.5	M52 × 2	M64 × 2	M80 × 2	60 Nm	60 Nm	60 Nm	100 Nm

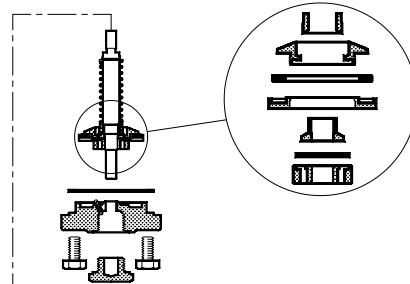
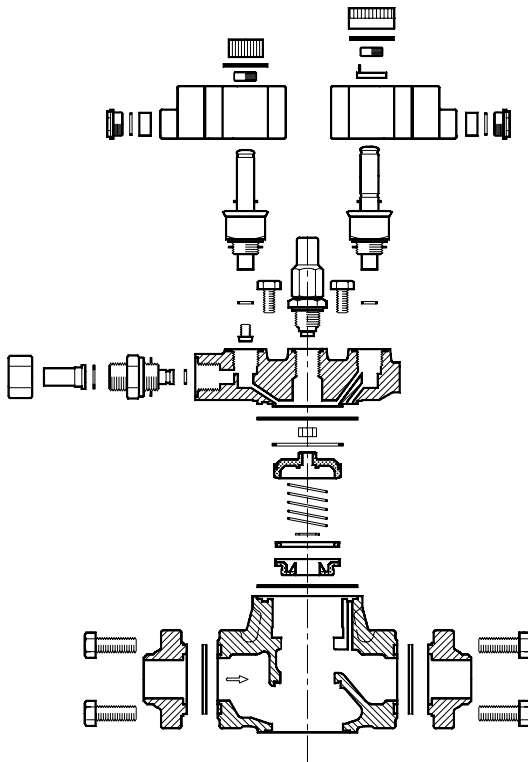
1 Nm = 0.1 kpm = 0.74 lbf-ft

10/12 W a.c. $\begin{matrix} +10 \\ -15\% \end{matrix}$  $\begin{matrix} t_{\min.} -40^{\circ}\text{C} \\ (-40^{\circ}\text{F}) \\ t_{\max.} 80^{\circ}\text{C} \\ (175^{\circ}\text{F}) \end{matrix}$
 Max. opening diff. pressure (MOPD) 21bar (300psig)

20 W d.c. $\pm 10\%$  $\begin{matrix} t_{\min.} -40^{\circ}\text{C} \\ (-40^{\circ}\text{F}) \\ t_{\max.} 50^{\circ}\text{C} \\ (120^{\circ}\text{F}) \end{matrix}$
 Max. opening diff. pressure (MOPD) 14bar (200psig)



$$120 > TB(^{\circ}\text{C}) \geq -50 \Rightarrow PB(\text{bar}) = 28$$



DANFOSS
AZ7F371.10

Reservedele
Spare parts
Ersatzteile
Pièces de rechange:
 Se katalog RK.OX.G3.02
 See catalogue RK.OX.G3.02
 Siehe Katalog RK.OX.G3.02
 Voir le catalogue RK.OX.G3.02

Teknisk brochure
Technical leaflet
Technische Broschüre
Fiche technique:
 Se RC.3F.A1.01
 See RC.3F.A1.02
 Siehe RC.3F.A1.03
 Voir RC.3F.A1.04